

# SAILOR COMPACT VHF RADIOTELEPHONE RT2047/D



## FULL DUPLEX

The RT2047/D VHF radiotelephone is a part of the revolutionary SAILOR Compact 2000 programme introduced by S.P. Radio, Denmark - Europe's leading manufacturer of maritime radio communication equipment

The small compact cabinet has room for both transmitter, receiver, and duplex filter.

The RT2047/D operates with an output of 25 W on all international maritime channels, plus up to 67 private channels. Dual Watch selcall, and scanning facilities are standard.

---

**SAILOR COMPACT RT2047/D**  
**S.P. RADIO A/S · AALBORG · DENMARK**





# SAILOR COMPACT RT2047/D

## DESCRIPTION

### Programming features

Incorporates the international maritime VHF channels and the channels required in USA., weather channels etc.

- The simplex channels 75 and 76 with reduced output when these are released by the authorities.
- One or more of the channels can be blocked either totally or the transmitter only.
- Automatic reduction to 1 Watt can be programmed on one or more of the channels.
- Can be programmed with up to 67 additional private channels.

- Blocking information to AUX-receiver can be programmed on one or more of the channels.

- Prepared for meeting the GMDSS requirements.

### Scanning

Enables the operator to listen out on several channels for traffic simultaneously.

Five operator programmed scanning programmes can be used, one for fishing channels, one for weather channels etc.

The scanning programme can be revised while operating. Even during scanning, your preference channel (normally channel 16) has full priority.

### Dual Watch

Enables the operator to listen out on two channels simultaneously, the selected channel and your preference channel - normally channel 16.

### Selcall

As standard the RT2047/D is provided with selcall decoder Selective call (CALL) or all ships call (CO) from the coast station will be decoded.

### Finger Guide

The panel is provided with membrane switches easy to use, reliable and hard-wearing. Cutouts in the metal front serve as a sure finger-guide even under the most difficult conditions.

### Display

Fitted with night illumination. All lettering can be illuminated from behind.

The display is the liquid crystal type and current operations appear in text form. The last setting will be re-displayed after the set has been switched off.

### OPTIONAL

#### 24 VDC Power Supply N420

To supply VHF RT2047/D from 24V DC.

#### AC/DC Power Supply N163S

To supply VHF RT2047/D from 24V DC or 110/220V AC with automatic change-over

#### Phone patch Unit H2076

for use when VHF RT2047/D is connected to telephone or telefax line.

### TECHNICAL DATA

Fulfils the international CEPT regulations.

## General

All international maritime VHF channels.

Private channels: ..... 67  
Operation: ..... Duplex and Simplex  
Modulation: ..... G3EJN (Phase)  
Antenna impedance: ..... 50  $\Omega$   
Frequency stability: .....  $\pm 10$  ppm  
Temperature range: ..... -20°C to +55°C.  
Nominal Power Supply: ..... 13.2V DC  
Power Supply Variation: ..... 12V DC-10% to +30%  
(with reduced data according to international standards)  
Power Consumption: ..... Standby = 0.5 Amp  
..... Transmit = 7.5 Amp  
Weight: ..... 5.4 kg

## Receiver

Frequency Range Simplex: ..... 155.400 - 158.000 MHz  
Frequency Range Duplex: ..... 160.000 - 162.600 MHz  
Sensitivity: ..... 0.30  $\mu$ V pd at 12 dB SINAD  
Duplex desensitisation: ..... Less than 1 dB  
A<sub>W</sub> Output Power: ..... 3 W/4  $\Omega$   
Phone Output: ..... 0.45V RMS/200  $\Omega$   
Distortion: ..... Less than 5%  
Scanning Facilities: ..... 5 scanning programmes with possibility for all your channels in each program  
Selective Call Decoder: ..... According to CCIR

## Transmitter

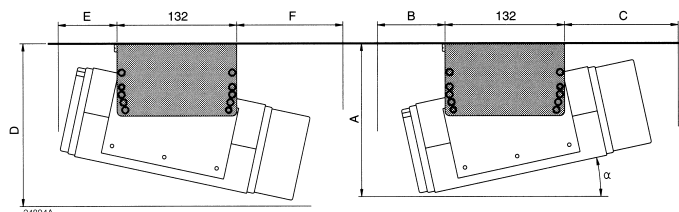
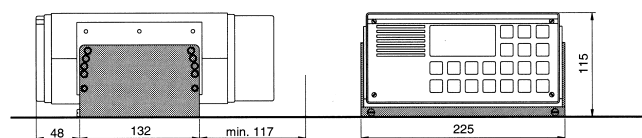
Frequency Range: ..... 155.400 - 158.000 MHz  
RF Output Power: ..... 25 W +0 to -0.7 dB  
Reduced RF Output: ..... 0.5 to 1 W  
Distortion: ..... Less than 2%

Specifications subject to change without further notice.

## UNIVERSAL MOUNTING BRACKET H2055

The universal mounting bracket H2055 can be used for table top, bulkhead or deckhead mounting for VHF RT2047/D. For other application such as mounting in console, -

SAILOR 19" rack or all the units in the compact program assembled on the bulkhead, see special information for mounting of the compact programme.



$\alpha$	A	B	C	D	E	F
0°	130	48	117	130	48	117
4.8°	142	48	117	146	53	117
9.6°	155	48	118	163	59	116
14.4°	167	45	133	178	65	113

Dimensions in mm

C and F incl. connection cables



## S.P. RADIO A/S

PORSVEJ 2 • DK-9200 AALBORG SV • DENMARK  
TEL. INT. + 45 9634 6100 • TELEX 69 789 SPRAD DK • TELEFAX INT.+ 45 9634 6101  
E-mail: sailor@sailor.dk